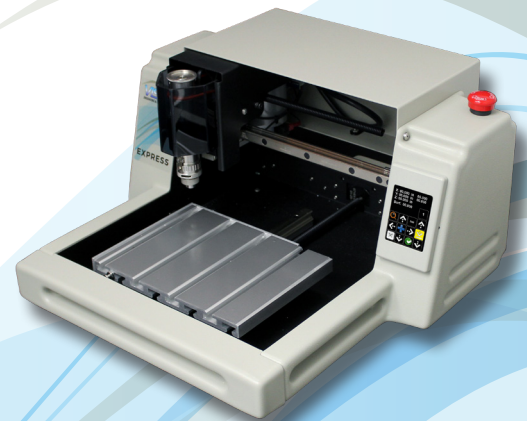
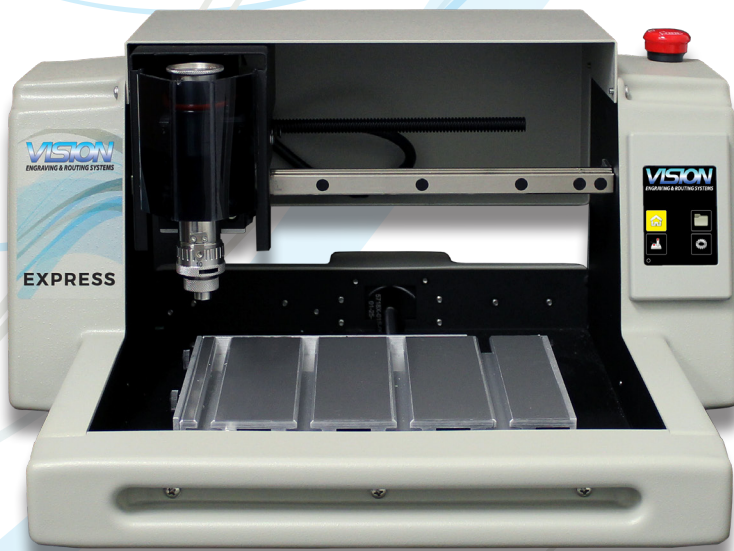




With V-Touch, the power of VISION is at your fingertip

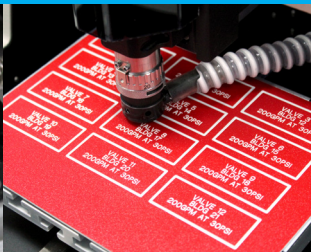


# EXPRESS Engraver

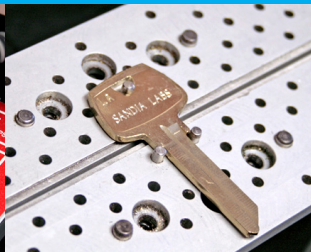
## Series 5



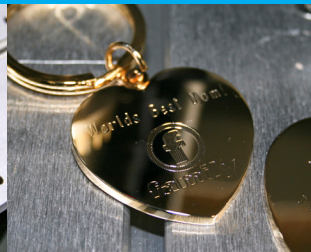
Serialization



Plastic Tags



Key Engraving



Key Chains



Gift Engraving

## VISION QUALITY AT AN AFFORDABLE PRICE!

The Series 5 Vision Express provides high quality engraving at an affordable price. The Vision Express engraver provides a 6" x 8" engraving area, and has a small footprint of only 17.5" x 17.5". The Express is an affordable, entry level engraving machine, ideal for engraving many items like tags, gifts, jewelry, plaques and awards. Engraveable materials include metal, acrylic, brass, wood, or plastic. The easy to use Vision Express comes with V-Touch, an advanced integrated touch screen panel, where all the machine controls are at your fingertips.

## THE EXPRESS OFFERS:

- Square linear bearings on all axes
- 2"/second maximum feed rate
- Heavy-duty aluminum t-slot table
- Adjustable edge guides
- 11/64" spindle
- Ethernet connection
- Touch screen operation
- Red laser pointer

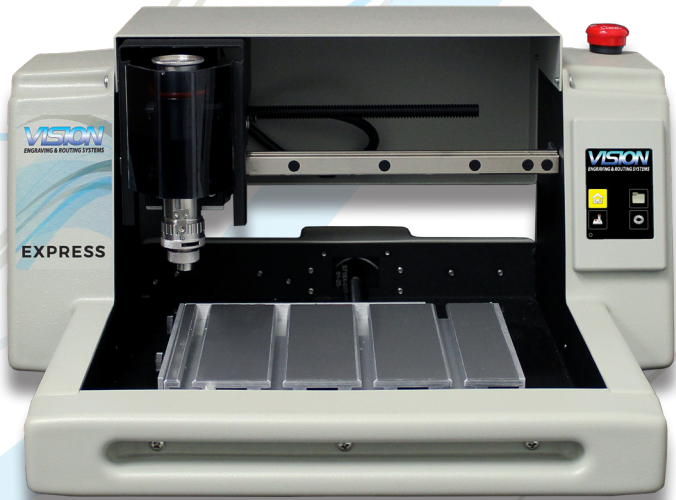
**Start increasing your productivity and profits now - call us today!**

**+65-67497337 or +603-80667981**



**Authorized Distributor:**  
Signvec Technology Pte Ltd  
10 Ubi Crescent#05-35, Ubi Techpark  
Singapore 408564

Tel: +65-67497337/Fax: +65-67497337  
email: [enquiries@signvec.com](mailto:enquiries@signvec.com)  
[www.signvec.com](http://www.signvec.com)



## WHY CHOOSE VISION?

- Leading worldwide manufacturer of engravers and routers
- Made in the USA since 1983
- High-quality, reliable products
- Dedicated technical support

### VISION EXPRESS ENGRAVER SPECIFICATIONS CHART

Software	Vision Express (Expert or PRO optional)
MAX. Work Area	6" x 8" (152.4 mm x 203.2 mm)
Maximum Work Piece Size	8" (203.2 mm) x Unlimited
Z-Axis Stroke	1.25" (31.75 mm)
Table Resolution	.0002"
Spindle Type	11/64 inch (4.366 mm) top load
Spindle Motor Power	1/7 HP
Maximum Speed	2 inches per second (50.8 mm/s)
Table Type	Aluminum T-slot
Interface	Ethernet
Warranty	1-Year Limited
Power Requirements	110/220V 3 Amp
Physical Dimensions	9.5" x 17.5" x 17.5" - 24 lbs
Shipping Dimensions	23" x 23" x 19" - 52 lbs. Ground, 61 lbs. Air
Additional Options	See Website

**Authorized Distributor:**